

Printed Help Document



Report Generator for TDSET3

Copyright © Tektronix, 2003, Inc. All rights reserved. Licensed software products are owned by Tektronix or its suppliers and are protected by United States copyright laws and international treaty provisions.

Use, duplication, or disclosure by the Government is subject to restrictions as set forth in subparagraph (c)(1)(ii) of the Rights in Technical Data and Computer Software clause at DFARS 252.227-7013, or subparagraphs (c)(1) and (2) of the Commercial Computer Software – Restricted Rights clause at FAR 52.227-19, as applicable.

Tektronix products are covered by U.S. and foreign patents, issued and pending. Information in this documentation supercedes that in all previously published material. Specifications and price change privileges reserved.

Tektronix, Inc., P.O. Box 500, Beaverton, OR 97077

TEKTRONIX, TEK and TEKPROBE are registered trademarks of Tektronix, Inc.
Version 1.2.4, 2004.

Table of Contents

Report Generator	1-1
About TDSET3.....	1-1
About Report Generator.....	1-1
Shortcut Keys for Report Generator.....	1-2
About Template Editor	2-1
Template Editor Window	2-2
Palette List	2-2
Application Fields	2-3
Native Fields	2-10
Oscilloscope Fields	2-12
Menus	2-13
Toolbars	2-15
Standard toolbar.....	2-15
Align/Size toolbar.....	2-15
Layout toolbar.....	2-16
Action toolbar.....	2-16
Status bar	2-16
Using Template Editor	2-16
Creating Custom Groups.....	2-17
Editing Custom Groups.....	2-18
Deleting Custom Groups.....	2-19
Change Template Size.....	2-19
Select All.....	2-20
Find.....	2-21

Replace	2-21
Bring To Front	2-22
Send To Back.....	2-22
Show/Hide Text	2-22
Position Caption.....	2-22
Editing Caption.....	2-22
Change Font.....	2-22
Align Fields	2-23
Make Same Size.....	2-23
Report Layout Editor	3-1
About Report Layout Editor	3-1
Report Layout Editor Window.....	3-2
List of Templates pane.....	3-3
Report Layout pane.....	3-4
Menus	3-4
Toolbars	3-6
Standard toolbar.....	3-6
Layout toolbar.....	3-6
Page toolbar	3-6
Action toolbar	3-7
Using Report Layout Editor	3-7
Configure page.....	3-9
Go To Page	3-9
Change Report Layout.....	3-10
Header/Footer Definition.....	3-10
Insert Pages	3-11
Report Viewer.....	4-1

About Report Viewer	4-1
Report Viewer Window	4-1
Menus	4-2
Toolbars	4-4
Standard toolbar	4-4
Align or Size bar	4-4
Status bar	4-5
Separators	4-5
Using Report Viewer	4-5
Export to RTF	4-6
Find	4-6
Replace	4-7
Bring To Front	4-8
Send To Back	4-8
Show/Hide Text	4-8
Position Caption	4-8
Editing Caption	4-8
Change Font	4-8
Align Fields	4-9
Make Same Size	4-9
Using Report Generator	5-1
Create or edit a test template	5-1
Define or edit a report layout	5-2
Generate, print or view a report	5-4
Appendix A: Error Messages	1

Table of Contents

List of Tables

Table 1-1: Shortcut Keys	1-2
Table 2-1: Template Editor Default Settings	2-1
Table 2-2: 1000BASE-T Application Fields.....	2-3
Table 2-3: 100BASE-TX Application Fields.....	2-6
Table 2-4: 10BASE-T Application Fields.....	2-8
Table 2-5: Template Editor File menu	2-13
Table 2-6: Template Editor Edit menu.....	2-13
Table 2-7: Template Editor View menu.....	2-13
Table 2-7: Template Editor Object menu.....	2-14
Table 2-7: Template Editor Window menu.....	2-14
Table 2-10: Template Editor Help menu.....	2-14
Table 2-10: Report Layout Editor Default Settings	3-2
Table 2-10: Report Layout Editor File menu	3-4
Table 2-10: Report Layout Editor Edit menu.....	3-5
Table 2-10: Report Layout Editor View menu.....	3-5
Table 2-10: Report Layout Editor Layout menu	3-5
Table 2-10: Report Layout Editor Page menu.....	3-5
Table 2-10: Report Layout Editor Help menu.....	3-5
Table 2-5: Report Viewer File menu.....	4-2
Table 2-5: Report Viewer Edit menu	4-2
Table 2-5: Report Viewer View menu	4-2
Table 2-5: Report Viewer Object menu	4-3
Table 2-5: Report Viewer Help menu	4-3

Report Generator

About TDSET3

The TDSET3 Ethernet Compliance Test Software tests the Ethernet 's physical layer for — 1000BASE-T, 100BASE-TX, and 10BASE-T in compliance with IEEE 802.3-2000 and ANSI X3.263-1995 standards.

[Click here to go back to TDSET3 Printed Help Document.](#)

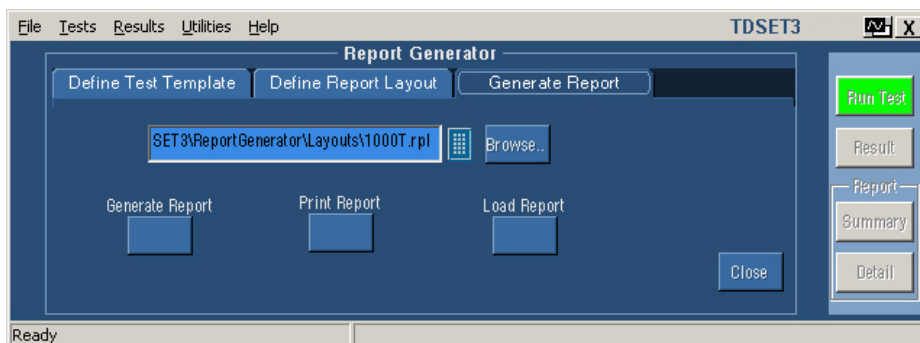
About Report Generator

The Report Generator enables you to generate and print reports directly from the oscilloscope. It enhances the TDSET3 application capabilities by simplifying the process of creating and maintaining reports.

The Report Generator automates the process of compiling the test results and generating the reports. It allows you to set up the template layout using the factory default templates or custom templates. The Report Generator allows you to save files in the custom file formats such as **.rgt**, **.rpl**, or **.rpt**. The generated reports can also be saved as an **.rtf** file. The Report Generator is integrated with the TDSET3 application.

There are several tools to convert RTF to PDF. For converting the .RPT to PDF, there are several tools such as RoboPDF™, GhostWriter™ and many others.

You can generate and print reports directly from the oscilloscope.



Perform the following steps to generate a report:

- Create a new or edit an existing test template.
- Define a new or edit an existing report layout.

- Generate, print, or view a report.

***Note:** The report image settings are as per the existing export settings of the oscilloscope. It is recommended that you use Graticule(s) only for Image view setting in export setup.*

Shortcut Keys for Report Generator

Table 1-1: Shortcut Keys

Action / common keys	Shortcut keys
Open	Ctrl+O
Save	Ctrl+S
Template editor	
New	Ctrl+N
Find	Ctrl+F
Replace	Ctrl+H
Print	Ctrl+P
Cut	Ctrl+X
Copy	Ctrl+C
Paste	Ctrl+V
Delete	Del
Select all	Ctrl+A
Bring to front	Ctrl+Plus
Send to Back	Ctrl+Minus
Edit Text	Alt+Enter
Report layout	
New	Ctrlr+N
GoTo	Ctrl+G
Refresh Template List	F5
Report viewer	
Find	Ctrl+F
Select All	Ctrl+A
Del	Del
GoTo	Ctrl+G

Bring to front	Ctrl+Plus
Send to Back	Ctrl+Minus
Edit Text	Alt+Enter

About Template Editor

The Report Generator allows you to create templates apart from providing you with factory default templates. Use the Template Editor to create and edit templates in the .rgt format (report generator template). A template stores the fields and their positions. You can save the templates and reuse them in any number of reports or report layouts. You can cut, copy, and paste across templates. Once the report is generated, the application fills in the fields of the template using the acquired data from the oscilloscope.

The Template Editor has a palette list that displays the following groups of fields: the TDSET3 Fields, Oscilloscope Fields, and Native Fields. The template editor provides you with the option to create custom groups; these groups once created, appear in the palette list. The fields are listed according to the group selected. You can use these fields to design and create a template.

You can place the fields in the template, and then move and size them appropriately. Multiple fields can be selected and placed in the template. You can select more than one field and make the following changes: cut, copy, paste, align, delete, size, edit font, and change caption of the fields.

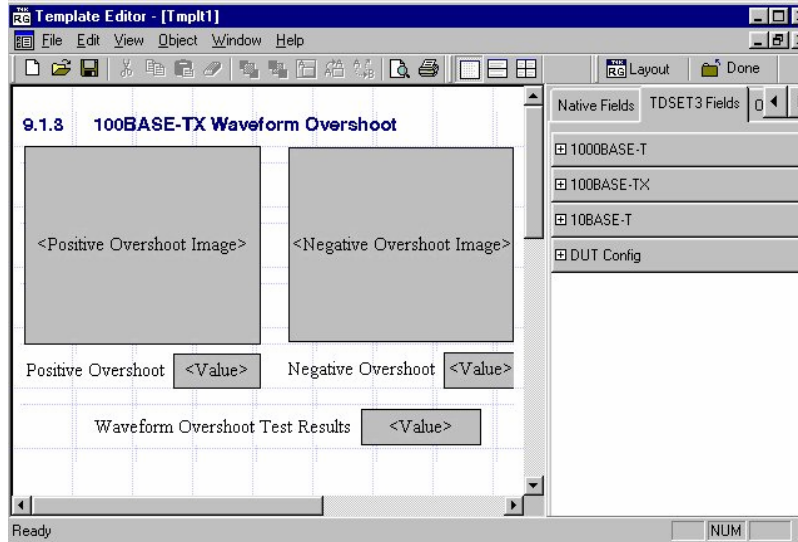
Once a template is defined and saved, either click **Done** to close the template editor, or use the **Layout** icon to directly go to the report layout editor.

Table 2-1: Template Editor Default Settings

Parameter	Selection	Default setting
Page Size	Change Template Size	8.5x11inches
Palette List	None	Displays application fields by default. If there are no application fields, the oscilloscope fields are displayed.
Static Text	Static Text	Inserts My Static Text.
Fields	None	The default size of the field dragged into the template is 200 X 300 pixels.

Template Editor Window

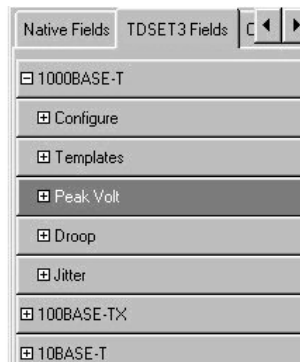
The Template Editor window comprises a menu bar, a toolbar, a client area, a palette list, and a status bar. When you select the New Template button in your application, the client area in the Template Editor Window is empty. When you select the Edit Template button in your application, the client area displays the selected template.



Palette List

View> Palette Toolbar

The Palette List is a floating toolbar that has a list of Native Fields, TDSET3 fields, and oscilloscope fields grouped logically. You can drag and drop fields from the palette list into the template. The palette toolbar is displayed by default; you can show or hide the toolbar by selecting View> Palette Toolbar.



The Palette list groups the fields into the following categories:

Native fields — Static Text, Rectangle, Line, Logo, Table, Date and Time.

<Application> fields — fields related to the application. The <Application> is replaced with the application from which you opened Report Generator. As you have opened Report Generator from TDSET3, the <Application> fields is displayed as TDSET3 fields.

Oscilloscope fields — Groups of fields related to the data acquired from the oscilloscope.

Custom groups — custom groups created.

Application Fields

The following table lists the options and sub menus for **1000BASE-T**. You can drag and drop any of these fields.

Table 2-2: 1000BASE-T Application Fields

Options	Sub menus
Configuration Parameters	
Source – Data	
Source – Master Clock	
Source – Slave Clock	
Source - TX_TCLK	
Source – Return Loss Probe 1	
Source - Return Loss Probe 2	
Source – Data (TM2)	
Source – Data (TM3)	
Meas Type	
Record Length	
Disturbing Signal	
Filter	
Clock Edge	
# Averages	
Output	
TX_TCLK	
Hi Resolution	
Jig Match - Amplitude	
Jig Match - Frequency	
Jig Match - DUT Amp	

Jig Match - Probe Point Amp		
Jig Match - Attenuation		
Output Waveform Return Loss		
Output Waveform OdB Marker		
Return Loss - Pair ID		
Return Loss – Load		
Return Loss - # Averages		
Return Loss – Smooth		
LP Filter		
Hysteresis		
Templates	Point A, Point B, Point C, Point F, Point H	Test Result
		Image
		Summary
Peak Volt	Point A	Test Result
		Point A Peak
		Point A Image
	Point B	% Diff A & B % Diff A & B, Test Result
		Test Result
		Point A Peak
		Point B Peak
		Point B Image
	Point C	Test Result
		Point A Peak
		Point B Peak
		Point C Peak
		% Diff C
		Point C Image
	Point D	Test Result
		Point A Peak
		Point B Peak
		Point D Peak
		% Diff D
		Point D Image
Droop	Point G	Test Result
		Point F Peak
		Point G Peak
		Limit
		Point G Image

	Point J	Test Result
		Point H Peak
		Point J Peak
		Limit
		Point J Image
Jitter	Master	
	Filtered with TX_TCLK	Result
		Master Pk-Pk Jitter
		Master Jtx_Out
		Master Pk-Pk Jitter + Master Jtx_Out
		Clock Edges
		Trend Plot: Master Filtered Pk-Pk Jitter
		Trend Plot: Master Jtx_Out
	Filtered without TX_TCLK	Result
		Data (TM2) Pk-Pk Jitter
		Trend Plot: Data (TM2) Jitter
		CLK Edges
	Unfiltered with TX_TCLK	Histogram Method Result, Master Pk-Pk Jitter, Median, Mean, Image
		TIE Method Result, Master Pk-Pk Jitter, Clk Edges, Trend Plot - Master Unfiltered Pk-Pk Jitter
	Unfiltered without TX_TCLK	Histogram Method Result, Data (TM2) Pk-Pk Jitter, Data (TM2) Jitter Image, Remarks
		TIE Method Result, Data (TM2) Pk-Pk Jitter, Trend Plot: Data (TM2) Jitter, CLK Edges
	Slave	
	Filtered with TX_TCLK	Result
		Master Pk-Pk Jitter
		Slave Pk-Pk Jitter
		Slave Jtx_Out
		Slave Pk-Pk Jitter + Slave Jtx_Out
		0.4 ns + Master Filtered Pk-Pk Jitter
		Clk Edges
		Trend Plot: Master Filtered Pk-Pk Jitter
		Trend Plot: Slave Filtered Pk-Pk Jitter
		Trend Plot: Slave Jtx_Out

	Filtered without TX_TCLK	Result
		Data (TM2) Pk-Pk Jitter
		Data (TM3) Pk-Pk Jitter
		Data (TM2) Pk-Pk Jitter - Data (TM3) Pk-Pk Jitter
		Trend Plot: Data (TM2) Jitter
		Trend Plot: Data (TM3) Jitter
		Clk Edges
	Unfiltered with TX_TCLK	Histogram Method Result, Slave Pk-Pk Jitter, Median, Mean, Image
		TIE Method Result, Slave Pk-Pk Jitter, Clk Edges, Trend Plot - Slave Unfiltered Pk-Pk Jitter
	Unfiltered without TX_TCLK	Histogram Method Result, Data (TM2) Pk-Pk Jitter, Data (TM3) Pk-Pk Jitter, Data (TM2) Pk-Pk Jitter - Data (TM3) Pk-Pk Jitter, Data (TM2) Jitter Image, Data (TM3) Jitter Image, Remarks
		TIE Method Result, Data (TM2) Pk-Pk Jitter, Data (TM3) Pk-Pk Jitter, Data (TM2) Pk-Pk Jitter - Data (TM3) Pk-Pk Jitter, Trend Plot: Data (TM2) Jitter, Trend Plot: Data (TM3) Jitter, Clk Edges
Distortion		Test Result, Peak Distortion, RMS, SNR, Other Details, Peak Distortion Image
Return Loss		Return Loss (1MHz - 100MHz), Image, Result
CM Voltage		Image, Result, Value

The following table lists the options and sub menus for **100BASE-TX**. You can drag and drop any of these fields.

Table 2-3: 100BASE-TX Application Fields

Options	Sub menus
Configuration Parameters	
Signal Source	
Source - Return Loss Probe 1	
Source - Return Loss Probe 2	
Acquisition Mode	
# Averages	
Mask Scale	
Output Waveform Return Loss	

Output Waveform 0dB Marker	
Return Loss - Load	
Return Loss - # Averages	
Return Loss - Smooth	
Differential Output Voltage	Output Voltage (+Vout)
	Output Voltage (-Vout)
	Differential Output Voltage Result
	Output Voltage (+Vout) Image
	Output Voltage (-Vout) Image
	Output Voltage (+Vout) Result
	Output Voltage (-Vout) Result
Signal Amplitude Symmetry	Amplitude Symmetry
	Amplitude Symmetry Result
	Amplitude Symmetry (+Vout) Image
	Amplitude Symmetry (-Vout) Image
Rise and Fall Times	Rise Time (+ve)
	Fall Time (+ve)
	Rise Time (-ve)
	Fall Time (-ve)
	Rise Time Result
	Fall Time Result
	Rise Time (-ve) Image
	Rise Time (+ve) Image
	Rise Time (+ve) Result
	Rise Time (-ve) Result
	Fall Time (+ve) Result
	Fall Time (-ve) Result
	Fall Time (+ve) Image
	Fall Time (-ve) Image
Rise and Fall Time Symmetry	Rise/Fall Symmetry Result
	Rise/Fall Symmetry (+ve)
	Rise/Fall Symmetry (-ve)
	Rise/Fall Symmetry (+ve) Result
	Rise/Fall Symmetry (-ve) Result
	Rise/Fall Symmetry (+ve) Image
	Rise/Fall Symmetry (-ve) Image
Waveform Overshoot	Overshoot (+ve)
	Overshoot (-ve)
	Waveform Overshoot Result
	Positive Overshoot Image

	Negative Overshoot Image
	Overshoot (+ve) Result
	Overshoot (-ve) Result
AOI Template	AOI Template Test Result
	AOI Template Image
Duty Cycle Distortion	Distortion (Duty Cycle)
	Distortion (Duty Cycle) Image
	Distortion (Duty Cycle) Result
	Test Result Summary
Jitter	Transmitter Jitter (+ve) Image
	Transmitter Jitter (-ve) Image
	Transmitter Jitter (+ve)
	Transmitter Jitter (-ve)
	Transmitter Jitter (+ve) Result
	Transmitter Jitter (-ve) Result
Transmitter Return Loss	Return Loss (1MHz - 100MHz), Image, Result
Receiver Return Loss	Return Loss (1MHz - 100MHz), Image, Result

The following table lists the options and sub menus for **10BASE-T**. You can drag and drop any of these fields.

Table 2-4: 10BASE-T Application Fields

Options		Sub menus
Configuration Parameters		
Signal Source		
Source - Return Loss Probe 1		
Source - Return Loss Probe 2		
Acquisition Mode		
# Averages		
Harmonic – Output		
Harmonic – # Averages		
Harmonic – Time Scale		
Output Waveform Return Loss		
Output Waveform 0dB Marker		
Return Loss – Load		
Return Loss – # Averages		
Return Loss – Smooth		
Templates		
Link Pulse	100 ohm w/o TPM	Head Image, Tail Image, Result, Test Result

	Load 1 w/o TPM	Summary
	Load 2 w/o TPM	
	100 ohm with TPM	
	Load 1 with TPM	
	Load 2 with TPM	
MAU	Internal Normal	Image, Mask Scale, Result, Test Result Summary
	Internal Inverted	
	External Normal	
	External Inverted	
TP_IDL	100 ohm w/o TPM	Head Image, Tail Image, Result, Test Result Summary
	Load 1 w/o TPM	
	Load 2 w/o TPM	
	100 ohm with TPM	
	Load 1 with TPM	
	Load 2 with TPM	
Parametric		
	With Cable	
Jitter	Normal 8BT Jitter 8.5BT Jitter	Image, MAU Type, Spec Range, Value, Result
	Without Cable	
	Normal 8BT Jitter 8.5BT Jitter	Image, MAU Type, Spec Range, Value, Result
Peak Diff Volt		Peak Diff Voltage Image
		Min Pos Peak Diff Voltage
		Max Pos Peak Diff Voltage
		Min Neg Peak Diff Voltage
		Max Neg Peak Diff Voltage
		Result
Harmonic		Harmonic of all ones Image
		Fundamental
		Harmonic 2 - 25
		Harmonic of all ones Result
		Spec Range
Transmitter Return Loss		Return Loss (5MHz), Return Loss (10MHz), Image, Result

Receiver Return Loss		Return Loss (5MHz), Return Loss (10MHz), Image, Result
CM Voltage		Image, Result, Value

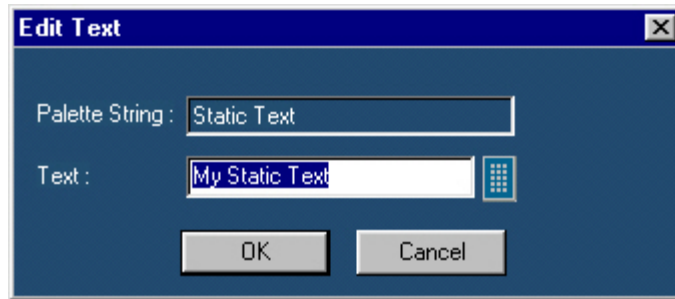
Native Fields

You can enhance the report using the following parameters from the Native fields — Static Text, Rectangle, Line, Logo, Table, Date, and Time.

You can drag any fields from the Native field and drop it in the active template.

Static Text

From the Native fields, drag and drop the static text.



In the **Edit Text** dialog box,

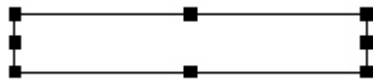
Click .

In the Virtual Keyboard, select the text and select **Enter**.

Click **OK**.

Rectangle

From the Native Fields, drag and drop the Rectangle into the Active Template.



The black squares that appear at the corners of the rectangle allow you to increase the size.

Line

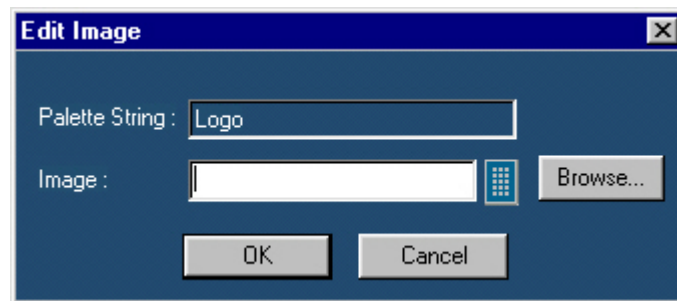
From the Native Fields, drag and drop the Line into the Active Template.



The black squares that appear at the corners of the line allow you to increase the size.

Logo

From the Native Fields, drag and drop the Logo into the Active Template.



In the **Edit Image** dialog box,

Select .

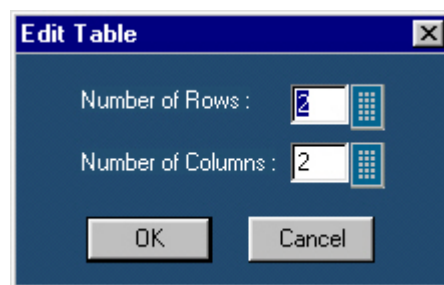
In the Virtual Keyboard, enter the path and filename and select **Enter**.
Or

Select **Browse** to navigate to the location where the image is available.

Click **OK**.

Table

From the Native Fields, drag and drop the Table into the Active Template.



In the **Edit Table** dialog box, you can select the number of rows and columns.

Select  next to Number of Rows and Number of Columns to edit the number.

In the Virtual Keyboard, enter the number and select **Enter**.

Click **OK**.

Date and Time

From the Native fields, drag and drop the Date and Time.

Oscilloscope Fields

These fields are grouped into ten different groups:

Waveform Group: The Waveform group has all the active live channels and independent channels (only CH1 to CH4) waveforms in both jpeg and bmp. These waveforms are generated to smoothen out the stair-step effect seen on the display.

Vertical Group: The Vertical group has all vertical related fields such as the vertical scale, position, offset, and others.

Horizontal Group: The Horizontal group has all horizontal related fields such as the horizontal divisions, scale, record length, position, sample rate, and others.

Math Group: The Math group has all the math related fields such as the math definition for a specified math channel, magnitude, spectral gate, spectral phase, spectral window, spectral frequencies of the math channel, and others.

Trigger Group: The Trigger group has all trigger related fields such as the trigger type, mode, level, and various fields related to different trigger types.

Measurement Group: The Measurement group has all the measurements such as the eight automated measurements and the immediate measurements.

Acquisition Group: The Acquisition group has all acquisition related fields such as the acquisition mode, acquisition state, repetitive mode, fast acquisition mode, and others.

Cursor Group: The Cursor group has all the cursor related fields such as the cursor mode, source, state and type of the cursor, H Bars, V Bars, and others.

Zoom Group: The Zoom group has all zoom related fields such as the zoom horizontal position, horizontal scale, and others.

Histogram Group: The Histogram group has all histogram fields such as the coordinates of histogram box. mode, size, source, and others.

Screen snapshot: The Screen Snapshot group has two variations: one in color and the other in black-and-white. For these screenshots, the attributes are graticule, ink-saver, and jpeg.

Menus

Table 2-5: Template Editor | File menu

Menu selection	Description
New	Creates a new template.
Open	Opens a template file.
Close	Closes the active template.
Save	Saves changes to the file.
Save As	Saves the template to a different file name using the Save as dialog box.
Print	Prints all or part of the contents of the active template.
Print Preview	Displays a sample view of the active template as it would be printed.
List of recent templates	Opens a previously (recent) opened template.
Exit	Closes the Template Editor.

Table 2-6: Template Editor | Edit menu

Menu selection	Description
Cut	Cuts the selected fields.
Copy	Copies the selected fields.
Paste	Pastes the clipboard content.
Delete	Deletes the selected fields.
Select All	Selects all the fields.
Create Custom Group	Creates a custom group.
Edit Custom Group	Edits the custom group.
Change Template Size	Changes the template size.
Find	Finds the data matching the search criteria.
Replace	Replaces the data matching the search criteria with the specified data.

Table 2-7: Template Editor | View menu

Menu selection	Description
Toolbar	Displays/Hides the toolbars selected such as Standard, Align Size, Layout, and Action.
Status Bar	Displays/Hides the Status bar.
Palette Bar	Displays/Hides the Palette Bar.
Grid Lines	Displays/Hides the Grid Lines in the client area.

Table 2-8: Template Editor | Object menu

Menu selection	Description
Bring To Front	Brings the selected fields to front.
Send To Back	Sends the selected fields to back.
Hide Text / Show Text	Shows or hides the caption of the selected parameter.
Position Caption on Top/to the Left	Positions the caption of the selected parameter to left or on top.
Edit Caption	Allows you to edit the caption of the selected parameter.
Change Font	Allows you to change the font of the selected parameter or the caption using the Change Font dialog box.
Align Fields	Aligns fields to top, bottom, left, or right.
Make Same Size	Resizes the selected objects to the same size by height, width, or both.

Table 2-9: Template Editor | Window menu

Menu selection	Description
New Window	Opens a new window duplicating the current active window.
Cascade	Arranges the open templates in the client area from the upper, left side to lower right side so that they overlap one another.
Tile	Arranges the open templates horizontally and vertically in the application client area without overlapping.
Arrange Icons	Arranges the icons of any templates you have minimized to the bottom-left of the window.
List of open templates.	Allows you to jump to another open template.

Table 2-10: Template Editor | Help menu

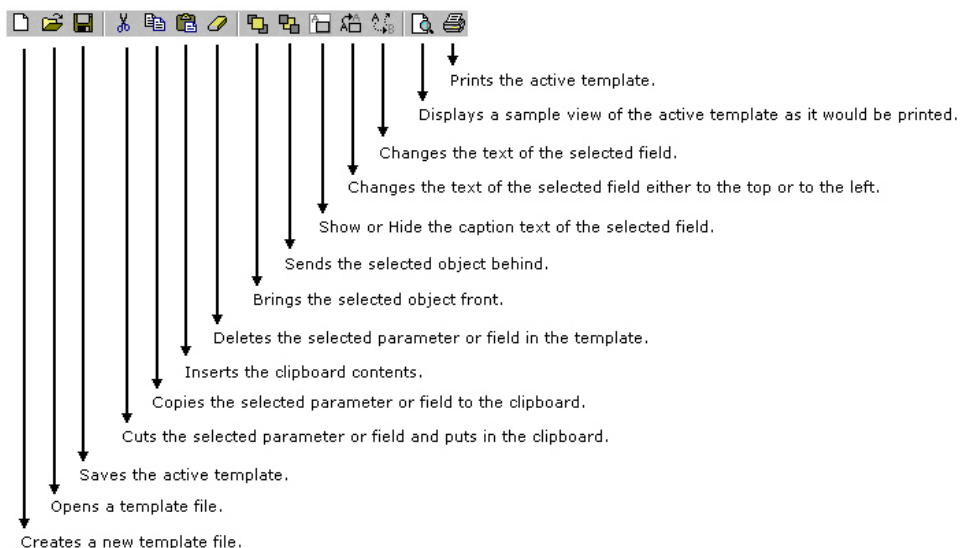
Menu selection	Description
Help Topics	Displays the online help.
About Template Editor	Displays version and copyright information.

Toolbars

The Template Editor has the following toolbars. You can choose to display or hide these toolbars using **View > Toolbars**.

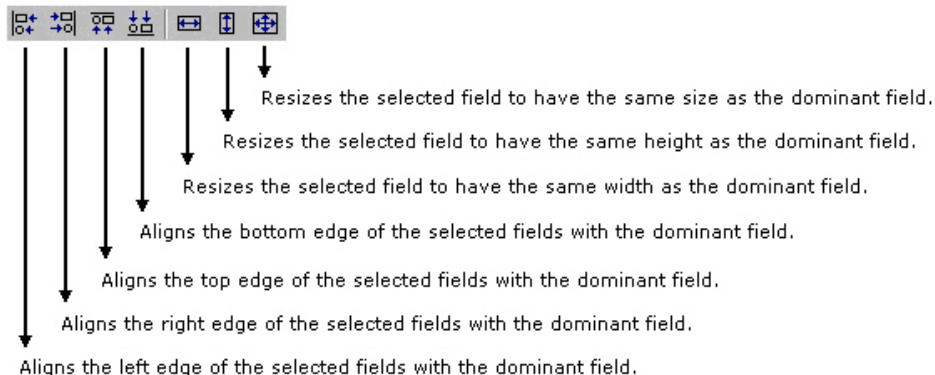
Standard toolbar **View > Toolbar > Standard**

Enable the Standard Toolbar by selecting it in the **View >Toolbar** menu.



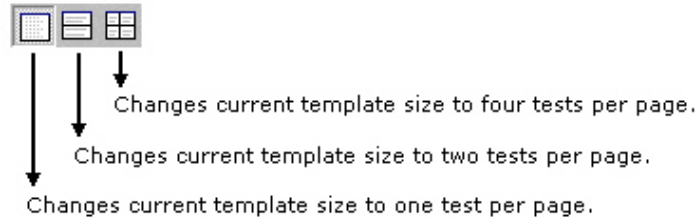
Align/Size toolbar **View > Toolbar > Align/Size**

Enable the Align/Size Toolbar by selecting it in the **View >Toolbar** menu.



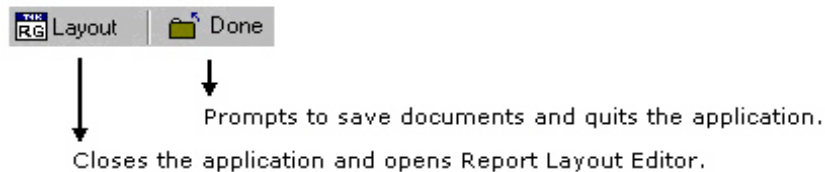
Layout toolbar **View > Toolbar > Layout**

Enable the Layout Toolbar by selecting it in the **View >Toolbar** menu.



Action toolbar **View > Toolbar > Action**

Enable the Action Toolbar by selecting it in the **View >Toolbar** menu.



The **Layout** button also prompts to save documents.

Status bar

The Status bar displays the application status and tool tips for selected options.

Using Template Editor

To create a new template:

1. From the Palette List, drag and drop the fields that you want in the report.
2. If you drag and drop a group from the Palette List, all the fields within the group are placed in the active template.
3. Organize the fields as you want them to appear in the report.
4. After you have finished creating the template, select File > Save.

To edit an existing template:

1. Organize the fields as you want them to appear in the report.
2. From the Palette List, drag and drop the fields that you want in the report.

3. If you drag and drop a group from the Palette List, all the fields within the group are placed in the active template.
4. Organize the fields as you want them to appear in the report.

After you have finished editing the template, select File > Save.

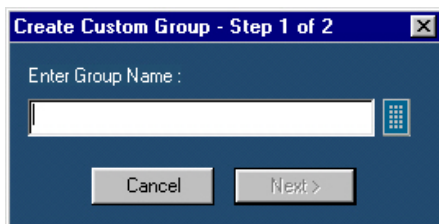
- You can create custom group, edit custom group, and change template size.
- You can also edit caption, change font, align fields, and make selected fields same size.

Creating Custom Groups

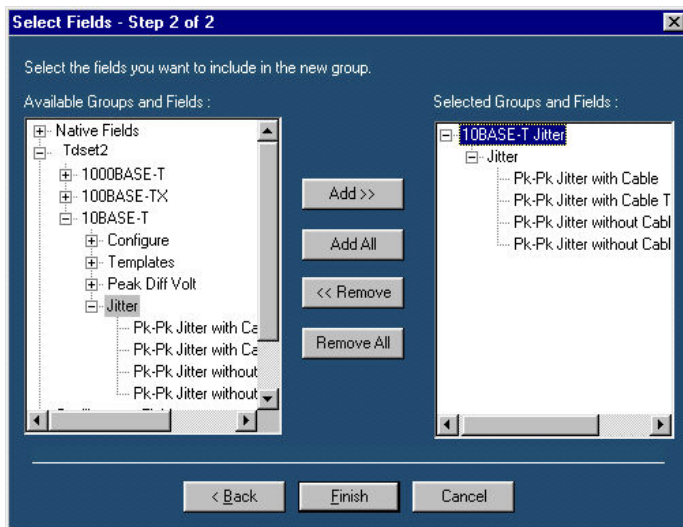
Edit > Create Custom Group

You can create custom groups using any fields from the Palette List.

1. Select Edit > Create Custom Group.



2. In the Create Custom Group dialog box, enter the group name. You can enter the group name using the Virtual Keyboard.
3. Click Next. The Select Fields dialog box displays the fields of Palette List.

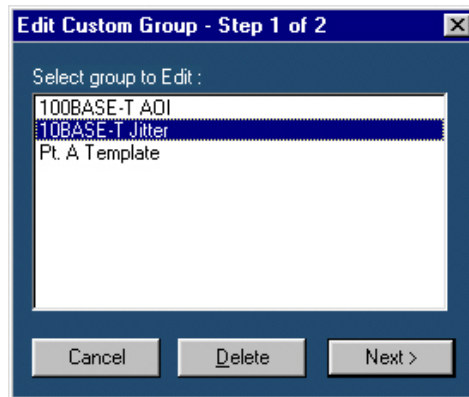


4. Using Add>>, Add All, <<Remove, or Remove All, you can select the fields you want to include in the new group. Then, click Finish.

Editing Custom Groups **Edit > Edit Custom Group**

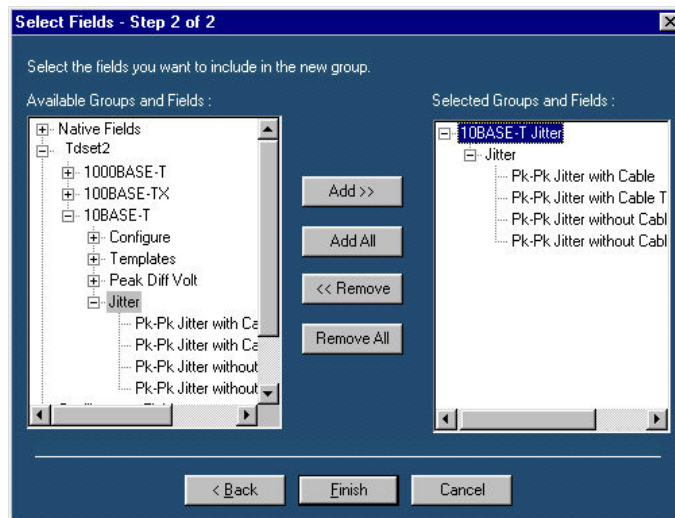
You can edit custom groups.

1. Select Edit > Edit Custom Group.



2. In Edit Custom Group dialog box, select a group to edit.

3. Click Next.



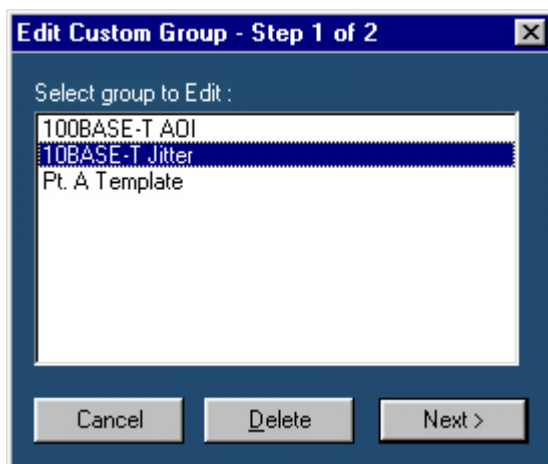
4. In Select Fields dialog box, select the fields you want to add or remove from the group using Add>>, Add All, <<Remove, or Remove All.

5. Click Finish.

Deleting Custom Groups **Edit > Edit Custom Group**

You can delete custom groups.

1. Select Edit > Edit Custom Group.

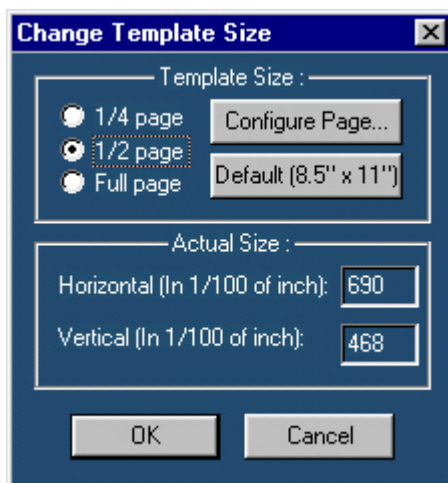


2. In Edit Custom Group dialog box, select a group to delete.
3. Click Delete. A message box appears asking you to confirm your choice.
4. Select Yes to delete.

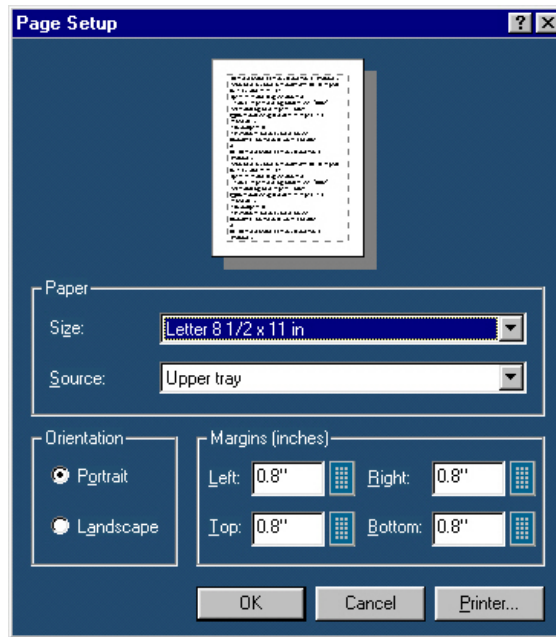
Change Template Size **Edit > Change Template Size**

You can change the size and page setup for a template.

1. Select Edit> Change Template Size.



2. In the Change Template dialog box,
3. Select the Template Size as 1/4 page, 1/2 page, or Full page.
4. If the printer is not available, select the Page Size as Default (8.5" x 11"); otherwise, select Configure Page.



5. In Page Setup dialog box, select the paper size, source, orientation, and margins.
6. Click OK to return to Change Template Size dialog box.
7. Click OK.

Note: Do not reduce the template size beyond the content filled in the template. You may lose information.

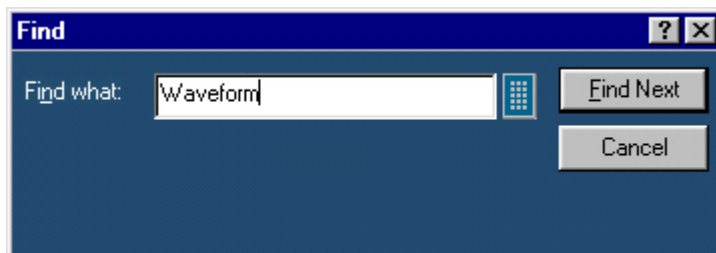
Select All Edit > Select All

To cut, copy, or delete the fields from the active template, you need to select the fields. You can also select the fields from the active template by clicking **CTRL+ selecting the fields**.

Find Edit > Find

You can search for text in the active template.

1. Select Edit > Find.

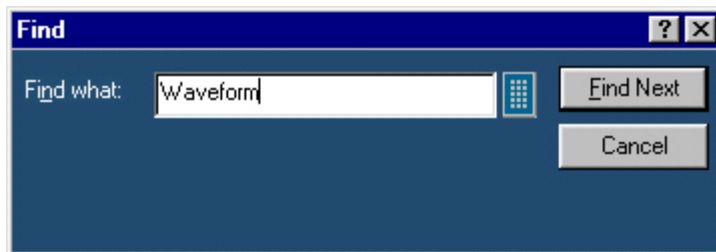


2. In Find dialog box, enter the search string using the Virtual Keyboard.
3. Select Find Next until you find the required search string.

Replace Edit > Replace

You can search and replace the text in the active template.

1. Select Edit > Replace.



2. In Replace dialog box, enter the search string using the Virtual Keyboard in the Find what field.
3. In Replace with field, using the Virtual Keyboard, enter the replacement string.
4. Select Find Next until you find the required search string.
5. Select Replace to replace one instance of the string.
or
Select Replace All to replace all instances of the string.
6. Click Cancel after you have replaced the strings.

Bring To Front Object > Bring To Front

You can bring the selected fields to the front.

Send To Back Object > Send To Back

You can send the selected fields to the back.

Show/Hide Text Object > Show/Hide Text

You can show or hide the captions for the selected fields.

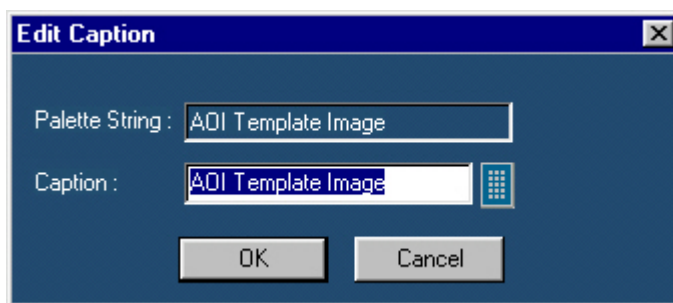
Position Caption Object > Position Caption to the Left, or on Top


You can position the caption of the selected fields on either the left or on the top.

Editing Caption Object > Edit Caption

You can edit the caption of the selected parameter or object.

7. Select Object > Edit Caption.

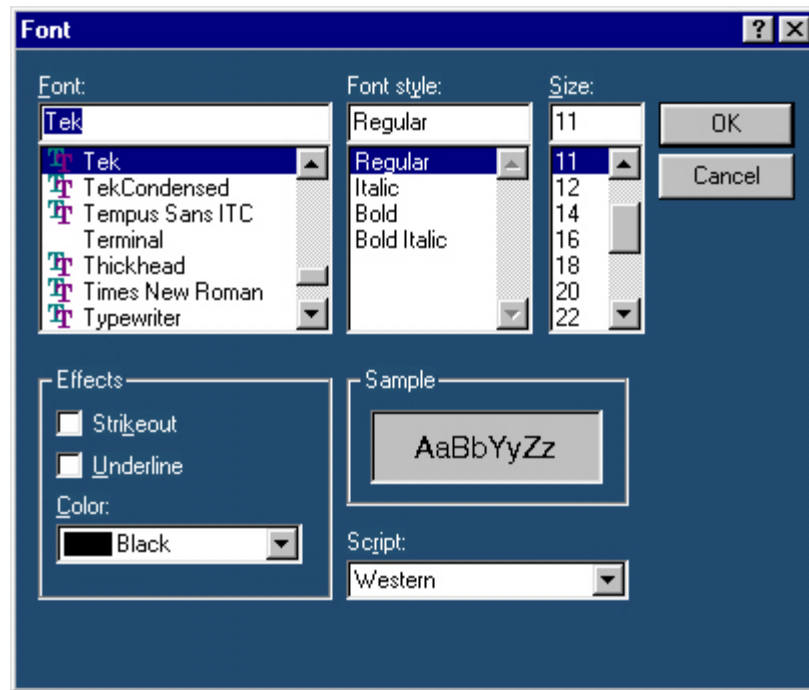


8. In Edit Caption dialog box, select  to enter the caption using the Virtual Keyboard.
9. Click OK.

Change Font Object > Change Font

You can change font for the selected field in the template.

10. Select the fields or fields in the active template.
11. Select **Object > Change Font** or right click the field to display the options.



12. In the Font dialog box, choose the font size, color and style, and effects.
13. Click **OK**.

Align Fields **Object > Align Fields**

You can align the fields to top, bottom, left, or right.

14. Select the fields in the active template.
15. Select **Object > Align Fields > Top, Bottom, Left, or Right** to align the fields accordingly.

Make Same Size **Object > Make Same Size**

You can set the selected fields to same height, width, or both.

16. Select the fields in the active template.
17. Select **Object > Make Same Size > Height, Width, or Both** to make the selected fields the same size.

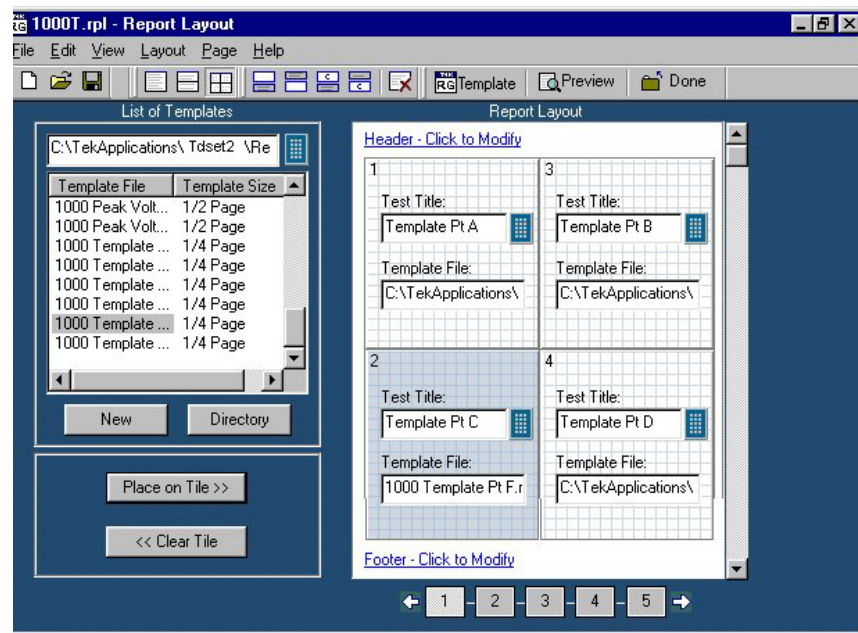
Report Layout Editor

About Report Layout Editor

The Report Layout Editor helps you define the report layout for generating reports. The report layout, once created can be reused for generating multiple reports.

You can select the number of test templates per page and position the templates in the report. The report can have multiple pages with different template sizes. Each template is a sub report with a unique test title. This unique test title helps you select the required template when generating a report. You can define headers and footers for the report layout.

To display the Report Layout Editor, select **Define Report Layout > New Report Layout**.



The Report Layout Editor window has two panes:

List of Templates: Displays a list of templates, template sizes, template folders, and buttons that allow you to clear or place a template in a report layout tile and to create new templates.

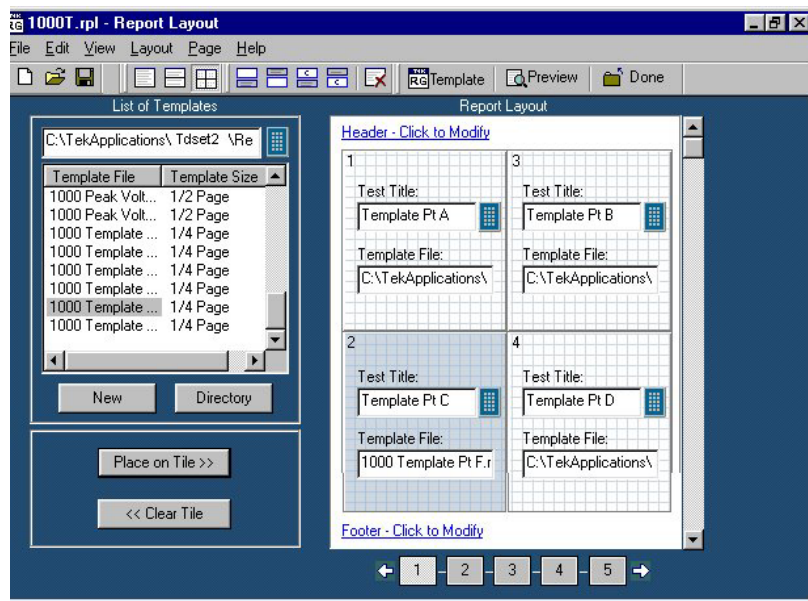
Report Layout: Displays the selected report layout and the header, footer definition.

Table 3-1: Report Layout Editor Default Settings

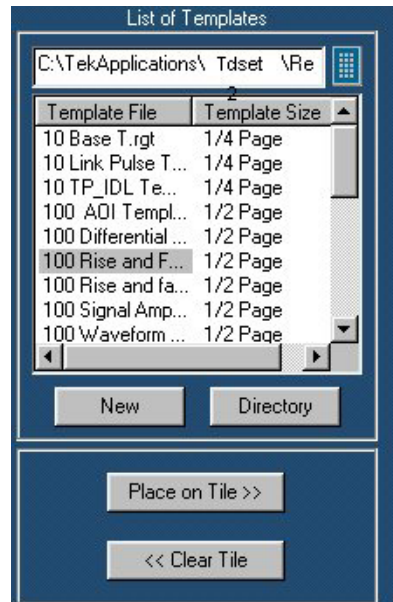
Parameter	Selection	Default setting
Report Layout	Layout	Four tests per page
Page Size	Page Setup	8.5 X 11 inches
Layout Editor	None	One page
Go to	Edit	Displays the current page number in the page layout
Font	None	Arial > Regular 9
Default Margin Size	None	Margin size on all sides of the paper is 0.8 inches

Report Layout Editor Window

The Report Layout Editor window comprises a menu bar, a tool bar, a list of templates pane, and a report layout pane.



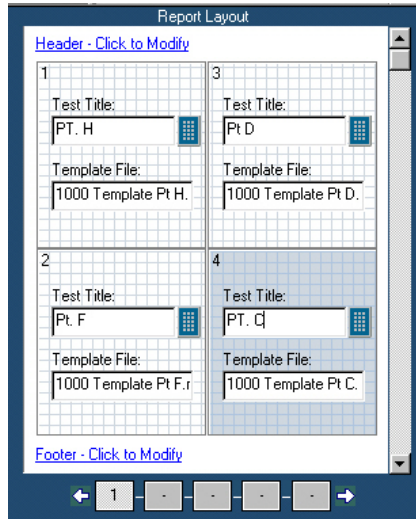
List of Templates pane The List of Templates pane displays the path of the template, templates in the folder, file names, and template sizes. You can select the template from this list and place it in the Report Layout pane.



In the List of Templates pane, you can do the following:

- Select a different path where you have saved the customized templates by using the Virtual Keyboard or clicking the **Directory** button that displays a **Browse for Folder** window.
- Create a new template by selecting **New**. The Template Editor Window is displayed, where you can create a new template.
- Drag and drop the Template File into the report layout pane's tile or select the template file and click **Place on Tile >>**.
- Clear the selected tile in the report layout pane by clicking **<< Clear Tile**.

Report Layout pane Depending on the number of tests selected per page, the Report Layout pane appears as shown by the following figure:



In the Report Layout pane, you can do the following:

- Specify a title for each test.
- Define or modify the header and footer.
- Navigate between pages of the report layout.

Menus

Table 3-2: Report Layout Editor | File menu

Menu selection	Description
New	Creates a new report layout.
Open	Opens a report layout file.
Save	Saves changes to the file.
Save As	Saves the report layout to a different file name using the Save as dialog box.
Page Setup	Prints all or part of the contents of the active template.
Configure Page	Configures the paper size, source, orientation, and margins using the Page Setup dialog box.
Default (8.5" X 11")	Configures the page setup to default — 8.5" X 11"
Layout Preview	Displays a sample view of the active report layout as it would be printed.
List of recent report layouts	Opens a previously (recent) opened report layouts.
Exit	Closes the Report Layout Editor.

Table 3-3: Report Layout Editor | Edit menu

Menu selection	Description
Go To	Goes to the page entered in the Go To Page dialog box.

Table 3-4: Report Layout Editor | View menu

Menu selection	Description
Toolbar	Displays or Hides the selected toolbars such as Standard, Page, Layout, and Action.
Status Bar	Displays or Hides the Status bar.
Refresh Template List	Refreshes the Template list in the List of Templates pane.

Table 3-5: Report Layout Editor | Layout menu

Menu selection	Description
One Test Per Page	Changes the report layout to fit one test per page.
Two Tests Per Page	Changes the report layout to fit two tests per page.
Four Tests Per Page	Changes the report layout to fit four tests per page.

Table 3-6: Report Layout Editor | Page menu

Menu selection	Description
Insert Blank	
Before Current Page	Inserts a blank page before the current page.
After Current Page	Inserts a blank page after the current page.
Insert Copy	
Before Current Page	Inserts a copy of the current page before the current page.
After Current Page	Inserts a copy of the current page after the current page.
Delete	Deletes the current page.

Table 3-7: Report Layout Editor | Help menu

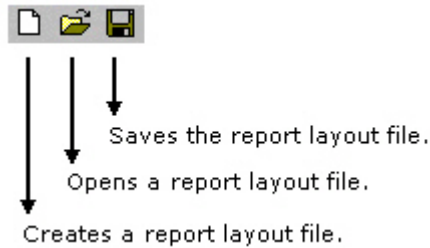
Menu selection	Description
Help Topics	Displays the online help.
About Report Layout Editor	Displays version and copyright information.

Toolbars

The Report Layout Editor has the following toolbars. You can choose display or hide these toolbars using **View > Toolbars**.

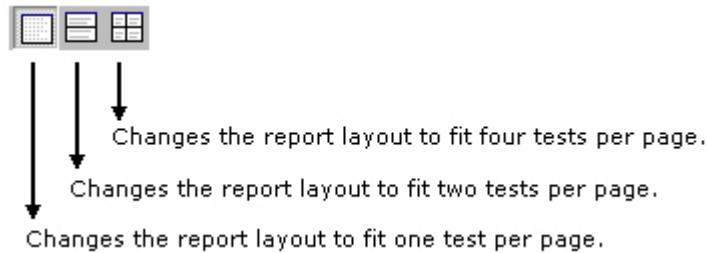
Standard toolbar **View > Toolbars > Standard**

Enable the Standard Toolbar by selecting it in the **View >Toolbars** menu.



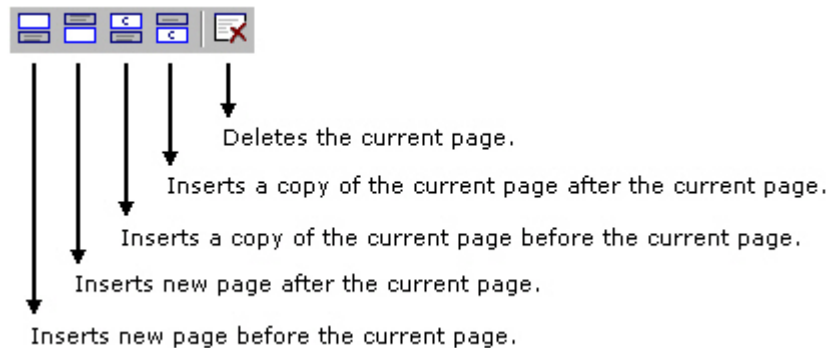
Layout toolbar **View > Toolbars > Layout**

Enable the Layout Toolbar by selecting it in the **View >Toolbars** menu.



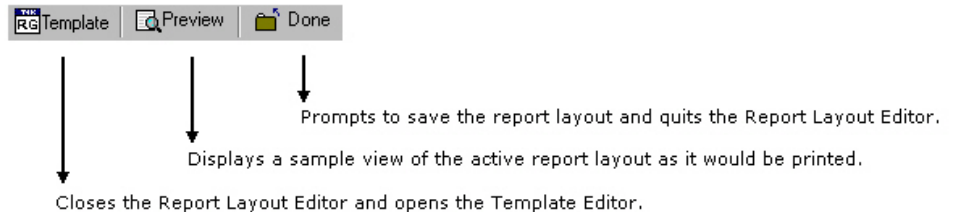
Page toolbar **View > Toolbars > Page**

Enable the Page Toolbar by selecting it in the **View >Toolbars** menu.



Action toolbar **View > Toolbars > Action**

Enable the Action Toolbar by selecting it in the **View > Toolbars** menu.



Using Report Layout Editor

To define a report layout, perform the following steps:

1. Set the report layout.
 - Select **Layout > One Test Per Page / Two Tests Per Page / Three Tests Per Page**. The Report Layout pane displays tiles depending on the selected number of tests per page.
2. Add the templates.
 - The List of Templates pane displays the templates in the default directory —C:\TekApplications\TDSET3\ReportGenerator\Templates.
 - From the List of Templates pane, drag and drop the templates into the tiles in the Report Layout pane. You can use the Place on Tile and Clear Tile buttons to move the templates to the tiles and to clear the tiles.
 - If you want to define a new template, select New in the List of Templates pane.
 - To browse for a different folder other than the default templates, select Directory to display Browse for Folder dialog box. Navigate to the folder where you have the templates stored and select OK.
3. Define Header and Footer.
4. Save the report layout.
 - Select **File> Save** to display the Save dialog box. Enter the report layout name and select **Save**.
 - The report layout is saved in the **.rpl** format.

To edit an existing report layout, perform the following steps:

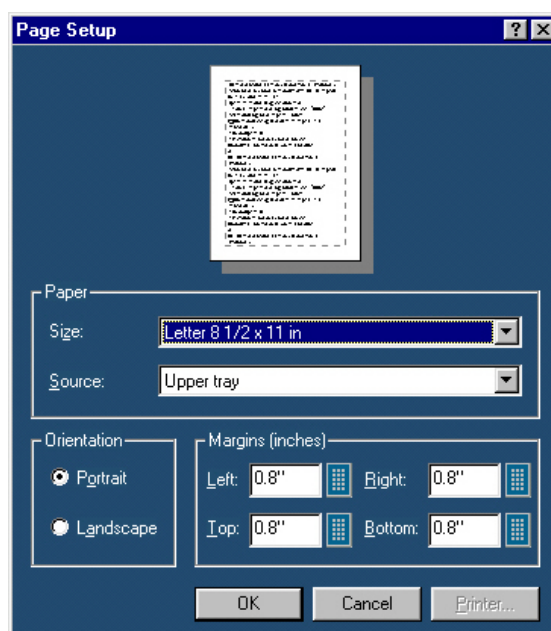
1. Change the report layout.
 - Select Layout > One Test Per Page / Two Tests Per Page / Three Tests Per Page. The Report Layout pane displays tiles depending on the selected number of tests per page.
 - The application displays an alert message — All the Test(s) information in the current page will be lost. Do you want to continue?
 - Select Yes to continue or No to stop.
2. Add or Remove the templates.
 - In the Report Layout pane, select the tile to which you want to add or remove the template.
 - To remove a template from the Report Layout, complete the following steps:
 - In the List of Templates pane, select Clear Tile .
 - The application displays an alert message — The test is already filled with data. Do you want to remove it?
 - Select Yes to continue or No to stop.
3. To add a template to the Report Layout, complete the following steps:
 - The List of Templates pane displays the templates in the default directory —C:\TekApplications\TDSET3\ReportGenerator\Templates.
 - From the List of Templates pane, drag and drop the templates into the tiles in the Report Layout pane. Select the Place on Tile button to move the template to the selected tile.
 - If you want to define a new template, select New in the List of Templates pane.
 - To browse for a different folder other than the default templates, select Directory to display the Browse for Folder dialog box. Navigate to the folder where you have the templates stored and select OK.
4. Modify Header and Footer.
5. Save the report layout.
 - Select File> Save to display the Save dialog box. Enter the report layout name and select Save.

- The report layout is saved in the .rpl format.

Note: Each report can only have up to five pages.

Configure page **File> Page Setup> Configure Page**

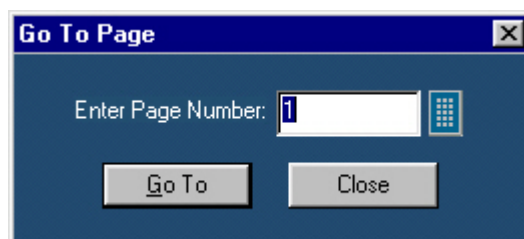
You can configure the paper size, source, orientation, and margins.




After you have configured the page setup, select **OK**.

Go To Page **Edit> Go To**

You can go to different pages in the report layout using the **Go To Page** dialog box.

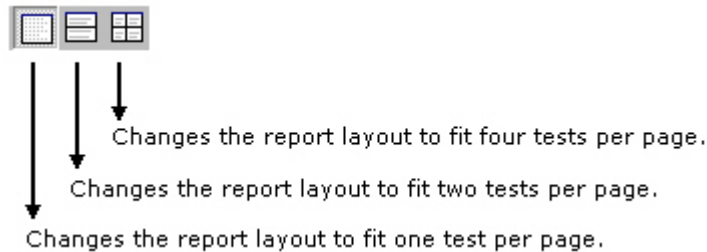


1. In the **Enter Page Number** field, enter the page number or select  to display the Virtual keyboard.

2. Select **Go To**. The Report Layout pane displays the relevant page.

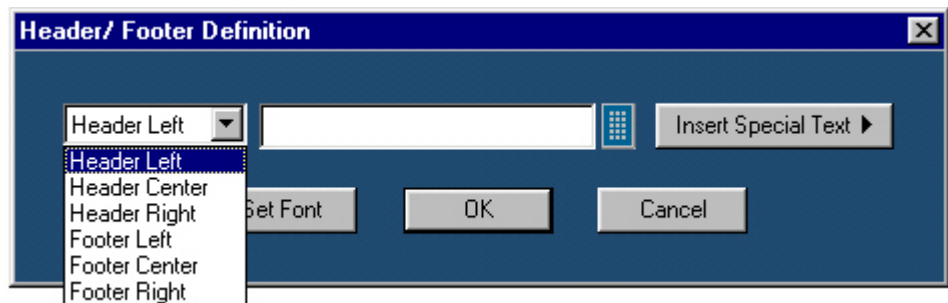
Change Report Layout **Layout > One Test Per Page / Two Tests Per Page / Four Tests Per Page**


You can change the report layout to fit one, two or four tests per page.



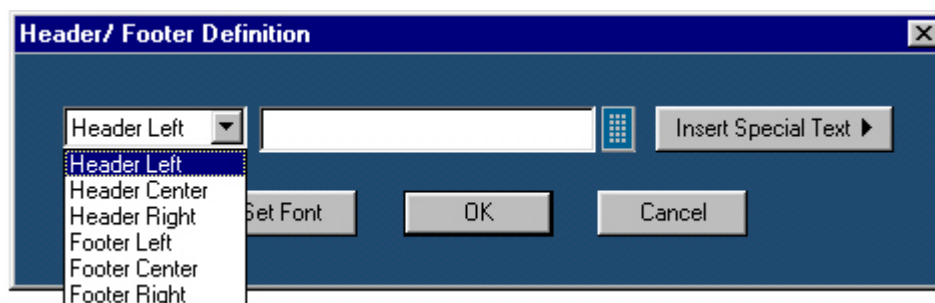
Header/Footer Definition To modify Header Definition, do the following:


1. In the Report Layout pane, click **Header - Click to Modify**.



2. In the Header/Footer Definition dialog box, select the header position - Header Left, Header Center, or Header Right.
3. Enter the Header definition in the text box.
 Select  to display the Virtual Keyboard. In the Virtual Keyboard, select the text and select **Enter**.
 or
 To insert the special text, select the **Insert Special Text** button to display a sub menu. Select **Date, File Name, Author, Page X of Y, Page X, or Logo**.
4. Select **Set Font** to change the font style, size, effects, color, and script for each field separately, then select **OK**.
5. In the Header/Footer Definition dialog box, select **OK**.
6. To modify Footer Definition, do the following:

7. In the Report Layout pane, click **Footer - Click to Modify**.



8. In the Header/Footer Definition dialog box, select the footer position - Footer Left, Footer Center, or Footer Right.
9. Enter the Footer definition in the text box.
- Select  to display the Virtual Keyboard. In the Virtual Keyboard, select the text and select **Enter**.
- or
- To insert the special text, select the **Insert Special Text** button to display a sub menu. Select **Date, File Name, Author, Page X of Y, Page X, or Logo**.
10. Select **Set Font** to change the font style, size, effects, color, and script for each field separately, then select **OK**.
11. In the Header/Footer Definition dialog box, select **OK**.

Insert Pages Select **Page> Insert Blank > Before Current Page / After Current Page** to insert a new page before the current page or after the current page

Select **Page> Insert Copy > Before Current Page / After Current Page** to insert copy of the current page before the current page or after the current page

Note: When you insert a copy of a page before or after the current page, the layout of the current page is the same layout as the new page.

Report Viewer

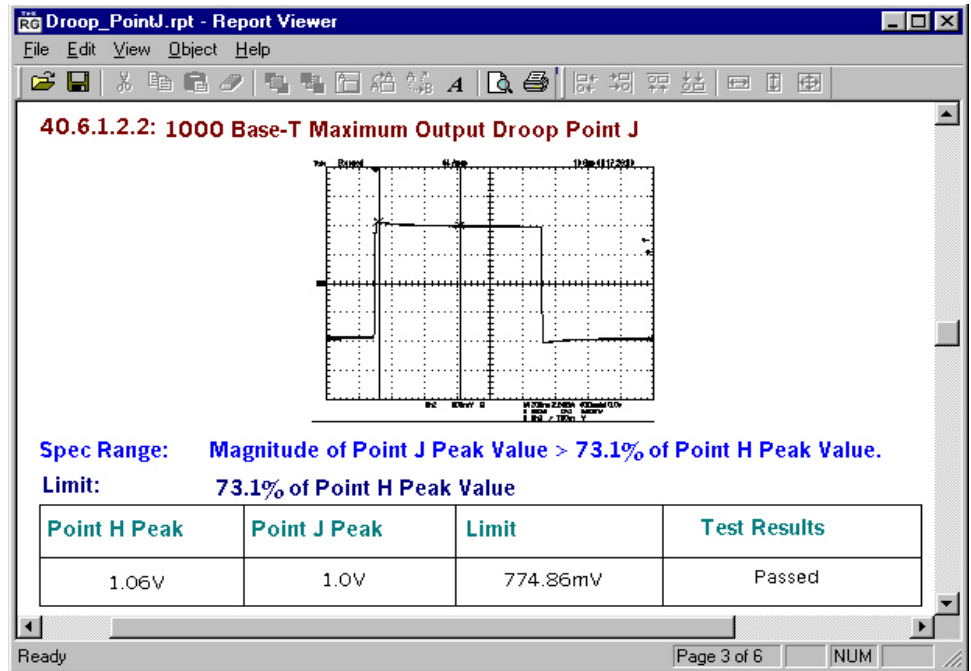
About Report Viewer

The Report Viewer allows you to view the generated report.

Under the Generate Report tab, select **Load Report** or **Generate Report** to display the Report Viewer and browse for the report that you want to view or generate.

Report Viewer Window

The Report Viewer window comprises a menu bar, a toolbar, an align/size bar, and a client area.



Menus

Table 4-1: Report Viewer | File menu

Menu selection	Description
Open	Opens a template file.
Save	Saves changes to the file.
Save As	Saves the template under a different file name using the Save as dialog box.
Print	Prints all or part of the contents of the active template.
Print Preview	Displays a sample view of the active template as it would be printed.
Print Setup	Prompts you to set up the Printer.
Export to RTF	Exports the report in .rtf (rich text format).
List of recent templates	Opens a previously (recent) opened template.
Exit	Closes the Report Viewer.

Table 4-2: Report Viewer | Edit menu

Menu selection	Description
Cut	Cuts the selected fields and places it on the clipboard.
Copy	Copies the selected fields to the clipboard.
Paste	Pastes the clipboard content.
Delete	Deletes the selected fields.
Select All	Selects all the fields.
Add Text Field	Adds a text field to the report.
Find	Finds the data matching the search criteria entered.
Replace	Replaces the data matching the search criteria with the specified data.
Go To	Goes to the page number specified in the Go To Page dialog box.

Table 4-3: Report Viewer | View menu

Menu selection	Description
Toolbar	Displays/Hides the Standard toolbar.
Align/Size Bar	Displays/Hides the Align/Size toolbar.
Status Bar	Displays/Hides the Status bar.
Separators	Displays/Hides the separators.

Table 4-4: Report Viewer | Object menu

Menu selection	Description
Bring To Front	Brings the selected field to front.
Send To Back	Sends the selected field to back.
Hide Text / Show Text	Shows or hides the caption of the selected field.
Position Caption on Top/to the Left	Positions the caption of the selected field to left or on top.
Edit Text	Allows you to edit the text in the selected field.
Change Font	Allows you to change the font of the selected field or the caption using the Change Font dialog box.
Align Fields	Aligns fields to the top, bottom, left, or right.
Make Same Size	Resizes the selected fields to the same size by height, width, or both.

Table 4-5: Report Viewer | Help menu

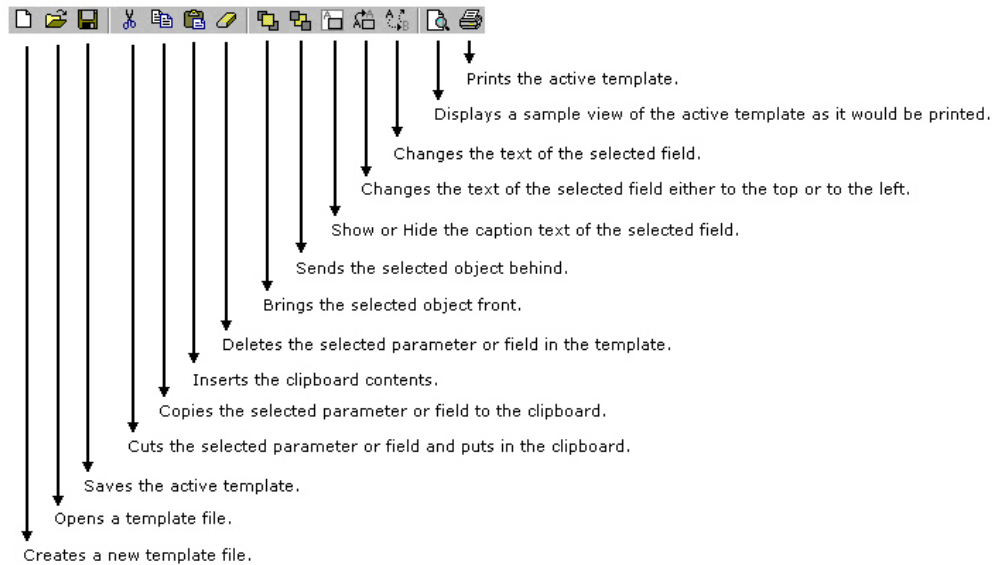
Menu selection	Description
Help Topics	Displays the online help.
About Report Viewer	Displays version and copyright information.

Toolbars

The Report Viewer has the following toolbars. You can choose display or hide these toolbars using **View > Toolbars**.

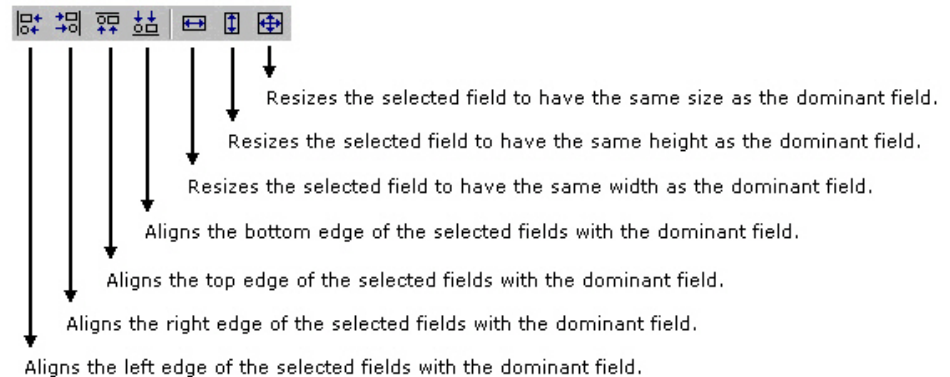
Standard toolbar **View > Toolbars > Standard**

Enable the Standard Toolbar by selecting it in the **View > Toolbars** menu.



Align or Size bar **View > Align/Size bar**

Enable the Align/Size Toolbar by selecting it in the **View > Align/Size bar** menu.



Status bar The Status bar displays the application status and tool tips for selected options.

Separators **View > Separators**


Shows or hides the template separators.

Using Report Viewer


To view a report

1. Select **File > Open**. The Open dialog box displays all the reports in the default directory —
C:\TekApplications\TDSET3\ReportGenerator\Reports.
2. Select the report that you want to view and select **Open**.
3. The Report Viewer displays the selected report.


To edit text


1. Select **Edit > Add Text Field**. The Edit Text dialog box appears.
2. In the **Text** field, enter the text or click  to display the Virtual keyboard. In the Virtual Keyboard, enter the text and select **Enter**.
3. In the Edit Text dialog box, select **OK**.

To find text

1. Select **Edit > Find**. The Find dialog box appears.
2. In the **Find what** field, enter the text or click  to display the Virtual keyboard. In the Virtual Keyboard, enter the text and select **Enter**.
3. In the Find dialog box, select **Find Next** until you find that text that you are searching for.

To replace text

1. Select **Edit > Replace**. The Replace dialog box appears.
2. In the **Find what** field, enter the text or click  to display the Virtual keyboard. In the Virtual Keyboard, enter the text and select **Enter**.

3. In the **Replace with** field, enter the text or click  to display the Virtual keyboard. In the Virtual Keyboard, enter the text and select **Enter**.
4. In the Replace dialog box,
 - Select **Find Next** to find the text that you are searching for.
 - Select **Replace** to replace one instance of the text that you want to replace.
 - Select **Replace All** to replace all instances of the text that you want to replace.
 - Select **Cancel** to cancel the operation and close the dialog box.

You can select some objects and bring to front or send to back. You can show/hide text, position caption to the left, or on top. You can edit text, or change font. You can align selected fields or make the selected fields to same size. You can export a report as an rtf.

Export to RTF **File> Export to RTF**

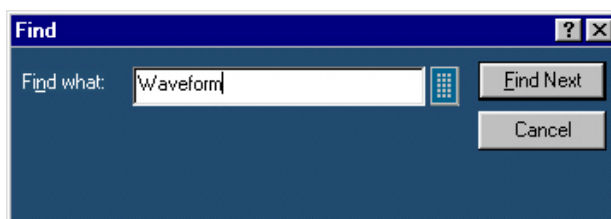
You can export a report as an .rtf (rich text format) file.

***Note:** Report Generator exports the report to a rtf file in a compressed format ensuring the file size to be small. If you edit the RTF file using Microsoft Word the file size may increase.*

Find **Edit > Find**

You can search for text in the report.

1. Select Edit > Find.

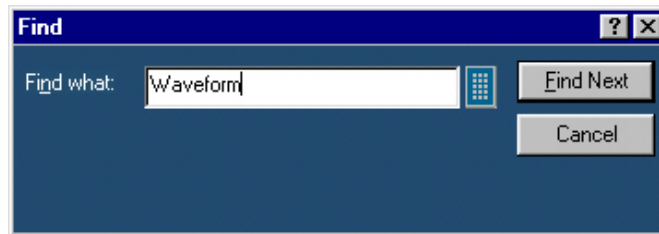


2. In Find dialog box, enter the search string using the Virtual Keyboard.
3. Select Find Next until you find the required search string.

Replace Edit > Replace

You can search and replace the text in the report.

1. Select Edit > Replace.



2. In Replace dialog box, enter the search string using the Virtual Keyboard in the Find what field.
3. In Replace with field, using the Virtual Keyboard enter the replacement string.
4. Select Find Next until you find the required search string.
5. Select Replace to replace one instance of the string.
or
Select Replace All to replace all instances of the string.
6. Click Cancel after you have replaced the strings.

Bring To Front Object > Bring To Front

You can bring the selected fields to the front.

Send To Back Object > Send To Back

You can send the selected fields to the back.

Show/Hide Text Object > Show/Hide Text

You can show or hide the captions for the selected fields.

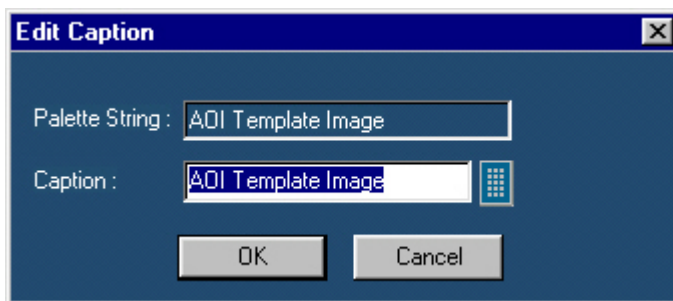
Position Caption Object > Position Caption to the Left, or on Top


You can position the caption of the selected fields on either the left or on the top.

Editing Caption Object > Edit Caption

You can edit the caption of the selected parameter or object.

1. Select Object > Edit Caption.

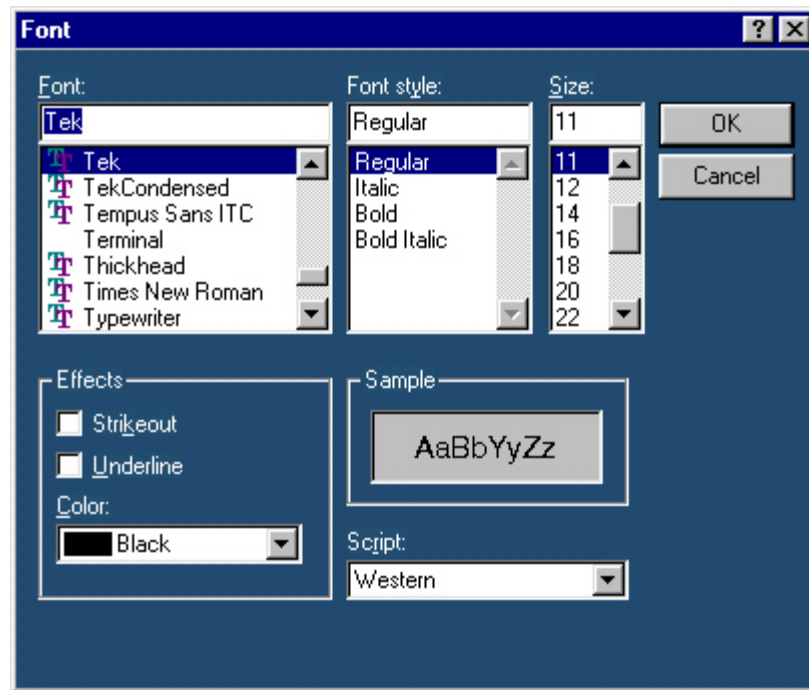


2. In Edit Caption dialog box, select  to enter the caption using the Virtual Keyboard.
3. Click OK.

Change Font Object > Change Font

You can change font for the selected field in the template.

1. Select the fields or fields in the active template.
2. Select **Object > Change Font** or right click the field to display the options.



3. In the Font dialog box, choose the font size, color and style, and effects.
4. Click **OK**.

Align Fields **Object > Align Fields**

You can align the fields to top, bottom, left, or right.

1. Select the fields in the active template.
2. Select **Object > Align Fields > Top, Bottom, Left, or Right** to align the fields accordingly.

Make Same Size **Object > Make Same Size**

You can set the selected fields to same height, width, or both.

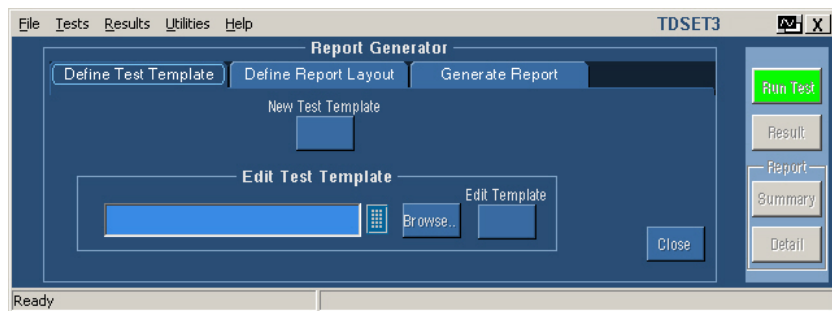
1. Select the fields in the active template.
2. Select **Object > Make Same Size > Height, Width, or Both** to make the selected fields the same size.

Using Report Generator

Create or edit a test template

Utilities > Report Generator > Define Test Template

You can create a new test template or edit an existing template.

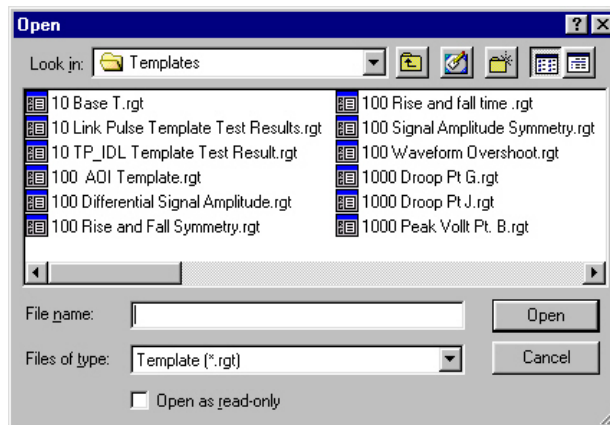


To create a new test template:

1. Under the Define Test Template tab, select New Test Template.
2. The Template Editor window appears with an empty client area.
3. Create the template using the Palette list.
4. After you have completed creating a new test template, select Done.

To edit an existing test template:

1. Under the Define Test Template tab, select Browse.

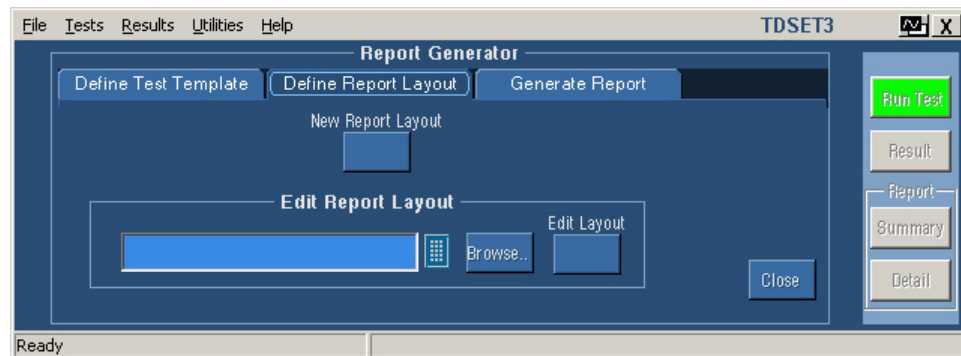


2. The open window displays the existing factory default templates and customized templates in
C:\TekApplications\TDSET3\ReportGenerator\Templates.
3. Select the template that you want to use and select Open.
4. In the Define Test Template tab, select Edit Template.
5. The Template Editor window appears with client area displaying the selected template.
6. Edit the template using the Palette list.
7. After you have completed editing an existing test template, select Done.

Define or edit a report layout

Utilities > Report Generator > Define Report Layout

You can create a new report layout or edit an existing report layout.

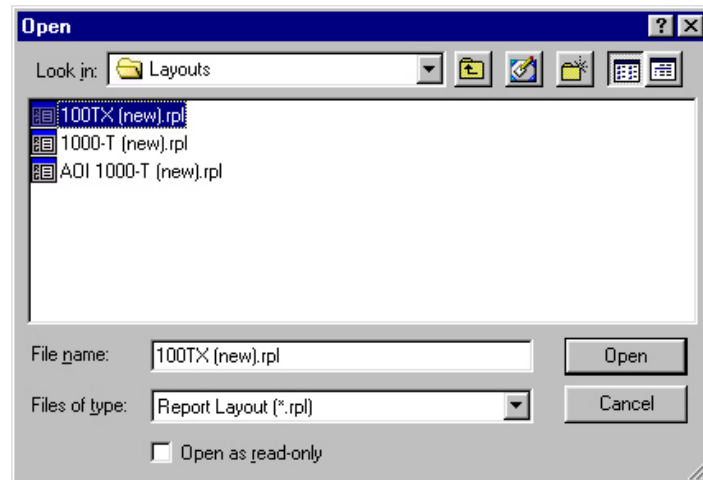


To create a new report layout:

1. Under the Define Report Layout tab, select **New Report Layout**.
2. The **Report Layout Editor** window appears with an empty report layout area.
3. Create the report by defining the report layout and dragging and dropping the templates to the report layout area.
4. After you have completed creating a new report layout, select **Done**.

To edit an existing report layout:

1. Under the Define Report Layout tab, select **Browse**.

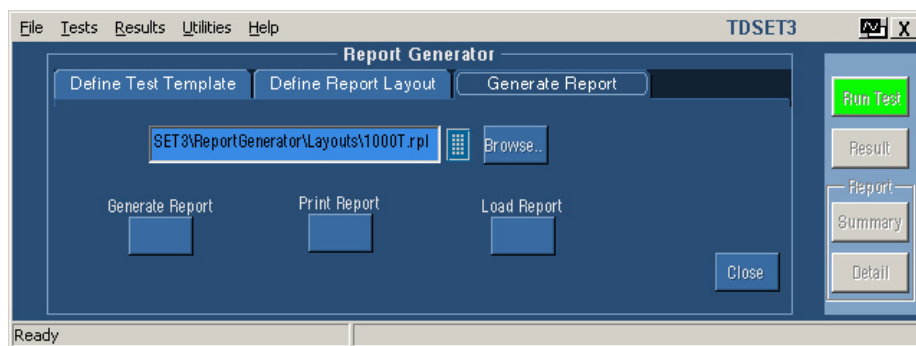


2. The Open window displays the existing factory default report layout and customized report layouts in **C:\TekApplications\TDSET3\ReportGenerator\Layouts**.
3. Select the report layout that you want to use and select **Open**.
4. In the Define Report Layout tab, select Edit Layout.
5. The **Report Layout Editor** window appears with report layout area displaying the customized report layout and selected template files.
6. Edit the report layout using the List of Templates and defining the Report Layout.
7. After you have completed editing an existing report layout, select **Done**.

Generate, print or view a report

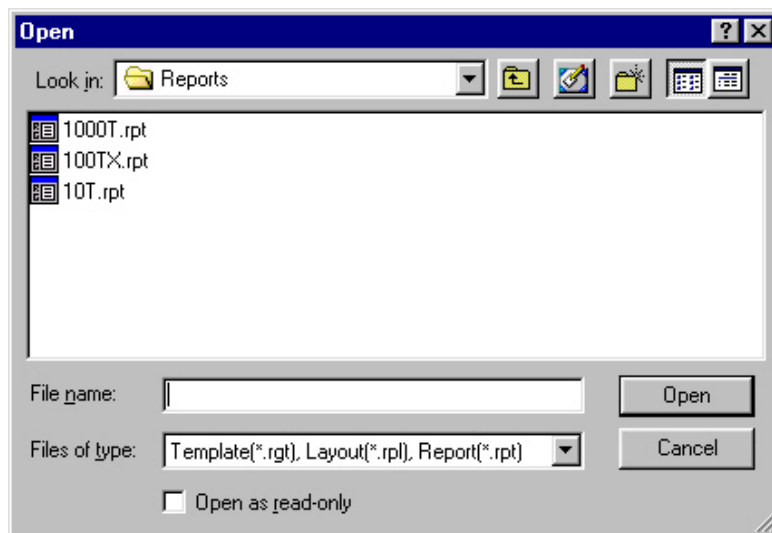
Utilities > Report Generator > Generate Report

You can generate, print, or view a report.

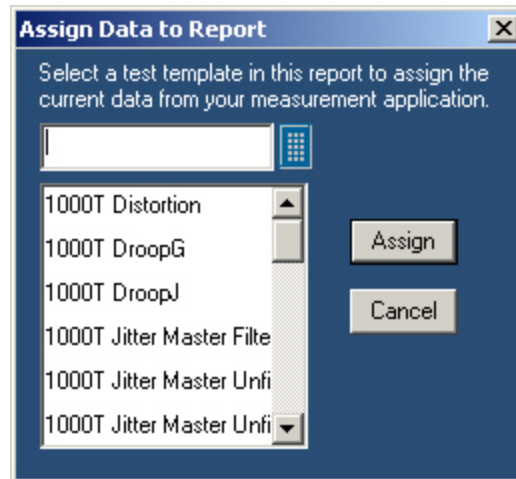


To generate a report

1. Under the Generate Report tab, select **Browse**.



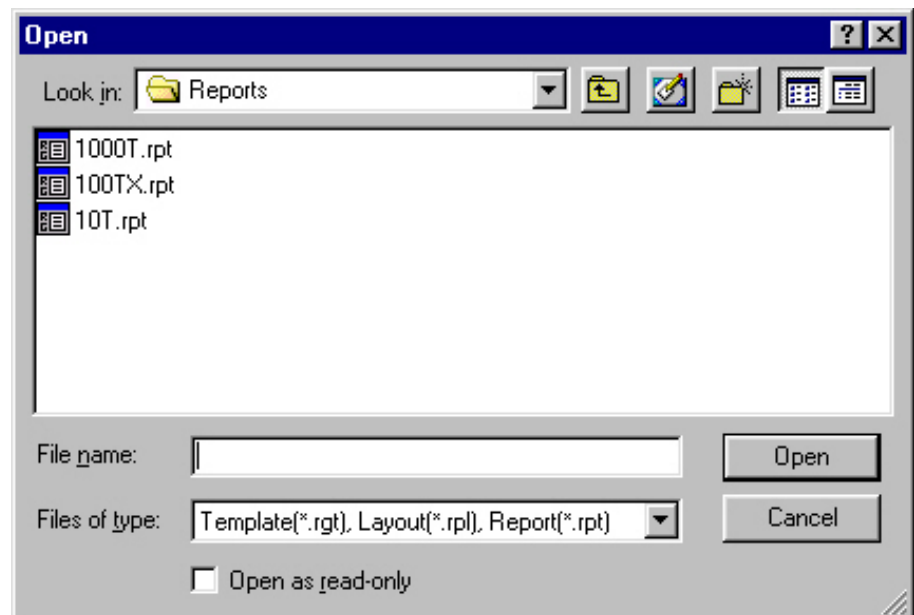
2. The Open window displays the existing reports in C:\TekApplications\TDSET3\ReportGenerator\Reports.
3. Select the report that you want to generate and select **Open**.
4. Under the Generate Report tab, select **Generate Report**.



5. In the Assign Data to Report dialog box, select a test template in this report to assign the current data from your measurement application.
6. Select **Assign**. The [Report Viewer](#) displays the report with current data from the application. You can choose to export to the report in a rtf format.

To print a report

1. Under the Generate Report tab, select **Browse**.



2. The Open window displays the existing reports in **C:\TekApplications\TDSET3\ReportGenerator\Reports**.
3. Select the report that you want to print and select **Open**. The Report Viewer displays the selected report with current data from the application.

- If the page settings do not match the page settings for the Report, a Page Size Mismatch message box displays a message — **The current page settings do not match the page settings for the Report. Do you want to continue?**
 - Click **Yes** to continue.
 - Click **No** to stop printing the report.
- If the printer is available, the report is printed.

Appendix A: Error Messages

Code	Error message	Description	Possible solution
Report Generator Interface Error Codes			
741	Some installation files are missing or corrupted, try reinstalling the application. The application will now exit.	The Application FDB File path retrieved from registry is corrupted or invalid file path.	Uninstall the application and try reinstalling.
742	Some installation files are missing or corrupted, try reinstalling the application. The application will now exit.	Application Id retrieved from registry is invalid. (<0)	Uninstall the application and try reinstalling.
743	Some installation files are missing or corrupted, try reinstalling the application. The application will now exit.	Application version is invalid.	Uninstall the application and try reinstalling.
744	Some installation files are missing or corrupted, try reinstalling the application. The application will now exit.	Not able to spawn Report Viewer.	Report Viewer executable file is missing, or there might be resource crunch if there are many applications running currently. Try closing some of the other applications. If this does not work, then uninstall and reinstall the application.
745	Internal initialization error. The application will exit now.	The Memory Map File or synchronization events for communication with RGScope are already open. The application was previously not shut down completely. Try closing RGScope.	The application was not closed completely last time. A module RGScope might be still running in the background. Try closing it.
746	Some installation files are missing or corrupted, try reinstalling the application. The application will exit now.	Not able to spawn Oscilloscope Interface.	RGScope file is missing, or there might be resource crunch if there are many applications running currently. Try closing some of the other applications. If this does not work, then uninstall and reinstall the application.
747	Some installation files are missing or corrupted, try reinstalling the application. The application will exit now.	The application FDB File read failed. The file may be read only.	Uninstall the application and try reinstalling.
748	Some installation files are missing or	The Acc application FDB File read	Uninstall the application and try

Appendix A: Error Messages

	corrupted, try reinstalling the application. The application will exit now.	failed. The file may be read only.	reinstalling.
749	Some installation files are missing or corrupted, try reinstalling the application. The application will exit now.	Not invoked by the desired application. The application Name passed by the invoking application is not found in the registry.	Uninstall the application and try reinstalling.
750	Some installation files are missing or corrupted, try reinstalling the application. The application will exit now.	Not able to spawn the Report Layout Editor.	The Report Layout Editor executable file is missing, or there might be resource crunch if there are many applications running currently. Try closing some of the other applications. If this does not work, then uninstall and reinstall the application.
751	Some installation files are missing or corrupted, try reinstalling the application. The application will exit now.	Not able to spawn the Template Editor.	Template Editor executable file is missing, or there might be resource crunch if there are many applications running currently. Try closing some of the other applications. If this does not work, then uninstall and reinstall the application.

Report Layout Editor Error Codes

721	Some installation files are missing or corrupted, try reinstalling the application.	Not InvOKed by the desired application. The application Name passed by invoking the application is not found in the registry.	Try uninstalling and reinstalling the application.
722	The Selected file is not a valid layout for this application.	The layout belongs to some other application.	The layout file being opened belongs to an older application, may have been uninstalled. It is not possible to open a file belonging to another application.
723	Layout file is not valid for the current version of the Application.	The layout was created for some other version of the application.	The opened layout file belongs to a different version of the same application, may have been uninstalled. It is not possible to open a file belonging to another version.

Template Editor Error Codes

761	Error in Initialization of Application.	The DLLs and application executables are not properly installed.	Try uninstalling and reinstalling the application.
762	Invalid Application Name	Registry Entries are not appropriate.	Try uninstalling and reinstalling the application.
763	The Selected file is not a valid template for this application.	The template belongs to some other application	The opened template file belongs to a different version of the same application, may have been

			uninstalled. It is not possible to open a file belonging to another version.
764	Template file is not valid for the current version of the Application.	The template was created for the some other version of the application.	The opened template file belongs to a different version of the same application, may have been uninstalled. It is not possible to open a file belonging to another version.
765	A Group with the specified name already exists.	User tried to create a custom group with the same name as an existing group.	Try using a different name than the existing groups

Oscilloscope Interface Error Codes

781	MFC initialization failed.	The MFC DLLs are not properly installed.	Reinstall the application.
782	Error in creating or setting system resource	The system resources required for communication are already open.	Close all application related executables and try again.
783	RGScope already running.	RGScope.exe is already running on the system.	Close RGScope and restart the application.
784	Memory Exception Occurred + <context specific message>	Illegal memory access.	Close the application and restart.
785	An Exception Occurred.	An unknown exception occurred in the application.	Close the application and restart.
786	File Exception Occurred + <context specific message>	Exception occurred while accessing a file	Close the application and restart.
787	Error in acquiring window resources + <context specific message>	The application was not able to acquire windows resources such as GDI objects.	Close the application and restart.
788	Failed to connect to the oscilloscope	The application was not able to connect to the oscilloscope. Make sure the TekScope.exe is running.	If this does not solve the problem reinstall the application.
789	Error querying Registry	The required registry key doesn't exist or an error occurred while getting it's value.	Close the application and restart. If this does not solve the problem reinstall the application.
790	Error in reading FDB file	The FDB file doesn't exist or it may be read-only.	Make sure the FDB file is present and not read-only. If this does not solve the problem reinstall the application.
791	Invalid Frame received	Oscilloscope interface received an invalid message from RG interface.	Close the application and restart.
792	Error in Allocating Memory	Error in getting memory from the system	Quit one or more applications running on the system and restart RGApp.
793	<context specific message>	Error in creating the jpeg file.	Ensure the "temp" folder exists and there is space on the hard disk.

Message boxes and dialogs in the user interface

701	Error Initializing Report Generator.	System resources can't be	If this does not work, then uninstall
-----	--------------------------------------	---------------------------	---------------------------------------

Appendix A: Error Messages

		allocated. Try closing some of the other applications.	and reinstall the application.
702	No valid file name was provided	This happens when no filename is selected in Application for generating a report .	Select a valid file.
703	<Path of the file selected>. The template file name is invalid	The reading of the template file fails. This will happen if the application fails to read the rgt file.	Select another valid template file.
704	<filename> is not a valid Report Layout	An invalid report layout was provided. This happens if the application fails to read the layout file.	Select another valid layout file.
705	<filename> is not a valid Report Layout file for the Application	The layout is not valid for the application. This means that the file was read properly but the application and version for the rpl file don't match the application.	Select another valid layout file for the application.
706	Invalid Report file specified	A file other than the Report Generator file(s) is selected with the extension (rpt rgt rpl) used by Report Generator files.	Select another valid file.
707	Invalid File Format	Other file types such as text are selected	Select another valid file.
708	<filename> is not a valid report file for <AppName>	The application name and version for the report file do not match that of application.	Select another valid report file for that application.
709	Unable to read the Report file.	An exception occurs for a rpt file. This happens if the application cannot read the report .rpt file.	Select another valid report file for that application.